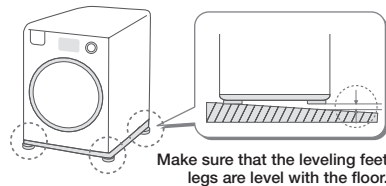


useful tips for your drum washing machine

✓ The descriptions and images in this document may differ from your actual purchased product. For more information, refer to the user manual.

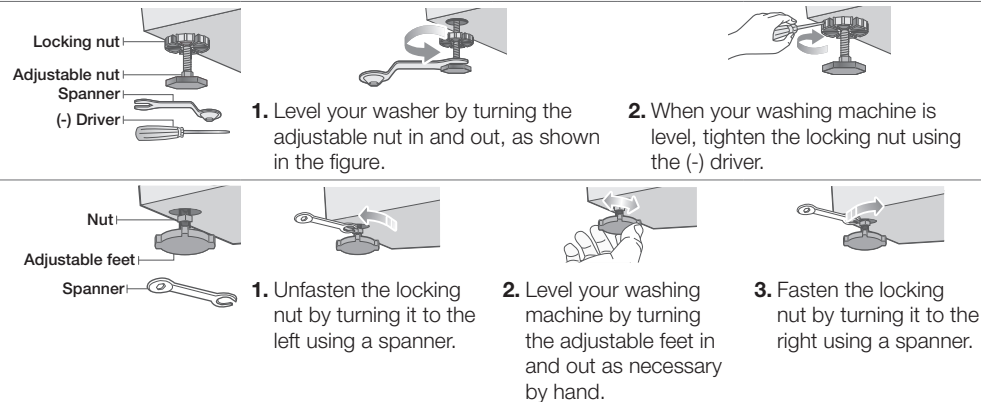
INSTALLING YOUR WASHING MACHINE

- Installing your washing machine in the location which is slippery or uneven, will result in vibrations and noise.
- If there is too much noise or vibration, check whether the four levelling adjustment legs are evenly and firmly on the floor.
- If the washing machine is not level, lift the washing machine slightly and adjust the lowest of the four levelling adjustment legs.
- ✓ Before using your washing machine, you must remove the shipping bolts from the back of the unit. For more information on removing the safety devices, refer to the user manual.



LEVELLING YOUR WASHING MACHINE WITH THE LEVELLING FEET

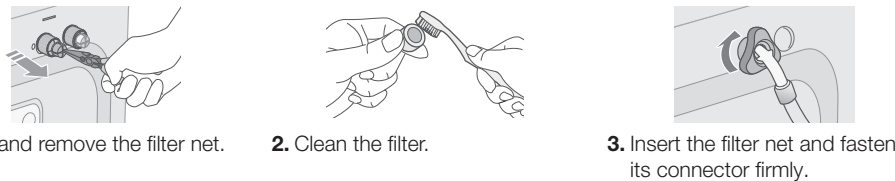
✓ Refer to the descriptions appropriate to your washing machine.



CLEANING THE FILTER

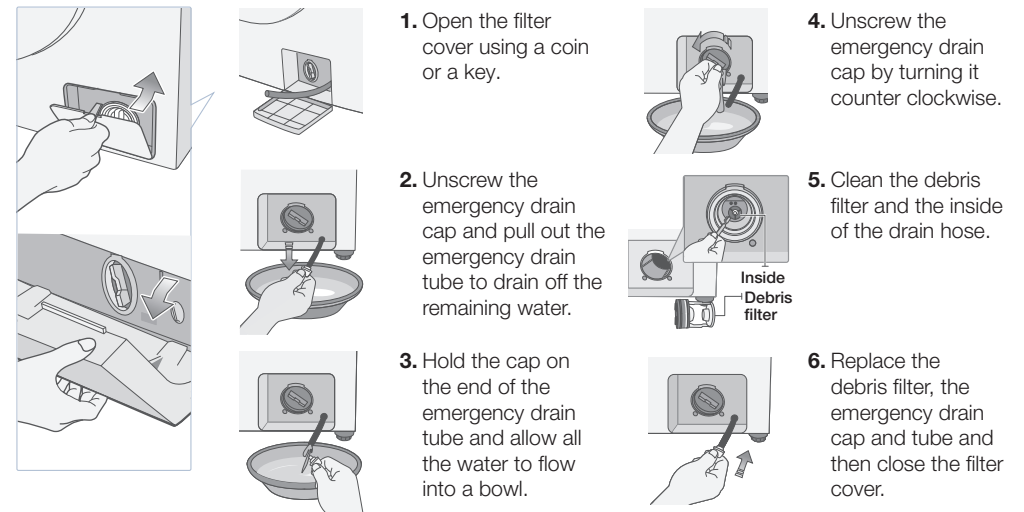
Cleaning the water supply filter

✓ If the filter net is not installed, it may cause a water leakage and operating error. Make sure to install it.




Cleaning the debris filter

✓ When water does not drain well or '5E' blinks on the display, clean the debris filter. The product appearance may differ from your washing machine. (However, the cleaning descriptions are the same.)



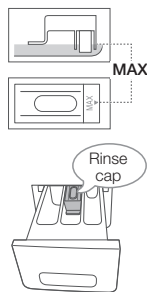
- ✓ If you open the debris filter when water remains inside the tub, water may flow out.
- ✓ If the debris filter is assembled incorrectly or not installed, it may cause a water leakage or operating error. Therefore make sure to assemble it correctly.

MAKE SURE YOU KNOW...

Adding the laundry	<ul style="list-style-type: none"> • Adding laundry ⇨ Press the Add laundry(Stop&Add) button and add the laundry when the Add laundry lamp turns on. • If you add the laundry during a spin cycle, it starts again with the initial set time regardless of the remaining time.
Washing bedding	<ul style="list-style-type: none"> • Wash bedding using only the Bedding course. ⇨ You can wash acrylic, mixed spinning and woolen bedding. ⇨ When washing general clothes, the washing machine may not operate in the optimal status. • Wash only one bedding item at a time regardless of size. ⇨ Insert bedding rolled up into a ball. The center of gravity is distributed evenly causing less vibrations and noise. ✓ Do not wash electric blankets or carpets. ✓ When spinning blankets, cotton bedding, and woolen bedding, too much noise and vibrations may occur and the wash cannot be completed as spinning is not performed. 




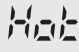

TRY THE FOLLOWING...

<p>When the door does not open</p>	<p>The door does not open when the temperature inside your washing machine is high or when the tub is filled with water.</p> <ul style="list-style-type: none"> When the internal air temperature after a wash is higher than 70 °C or the water temperature is more than 55 °C. Wait until the internal temperature has dropped. When the tub is filled with water. <ul style="list-style-type: none"> Select Spin to drain the water. Then you will be able to open the door. For some models, you can open door when "End" is displayed or the end melody is played. <p>✓ If you open the door by force, it may result in damage to the product or safety issues.</p>
<p>When selecting the Dry function</p>	<p>For the Drying capacity, 1/3 of the wash capacity is reasonable. The maximum drying rate is 95%.</p> <ul style="list-style-type: none"> If you insert more than the maximum drying capacity specified in the user manual, the drying performance may decrease. Remove and shake out the laundry. Heat and moisture is removed and the laundry will be dry.
<p>When inserting fabric softener</p>	<p>If fabric softener is inserted above the reference line (MAX) of the fabric softener compartment, fabric softener may enter directly into the tub.</p> <ul style="list-style-type: none"> Insert fabric softener only up to the reference line (MAX) so that it does not overflow. <p>If the rinse cap (hereafter cap) is not inserted correctly or there is foreign material in the cap when using concentrated fabric softener (liquid fabric softener of a high viscosity), fabric softener or water may remain.</p> <ul style="list-style-type: none"> Check whether the cap is correctly inserted into the detergent compartment where the fabric softener is inserted. Open the detergent compartment and press the removal button inside. Remove and clean it.
<p>When the wash time increases</p>	<p>The wash time may increase if an unbalance is detected with the load, the machine will automatically try to balance the load. This process may extend the wash program time.</p> <ul style="list-style-type: none"> Press the Start/Pause button and then check the laundry status. Spread the laundry evenly and perform the course again.



SELF-TEST

✓ If any error message other than the following error messages is displayed, refer to the user manual.

Indication	Symptom	Action
	<p>When the door is opened</p>	<p>Is the door opened? ⇨ Make sure to operate your washing machine after closing the door.</p>
	<p>When no water is supplied</p>	<p>Is the tap closed? ⇨ Turn on the tap. Is the filter net of the water supply hose connector blocked? ⇨ Remove and clean the filter net of the water supply hose.</p>
	<p>When the water does not drain</p>	<p>Is the drain filter blocked? ⇨ Clean the drain filter. Is the washing machine frozen because of the cold weather? ⇨ Add hot water into the tub and let it defrost for about one hour.</p>
	<p>When the internal temperature of the drum is high</p>	<p>Did the washing machine pause while drying or performing an air wash? ⇨ The cooling fan operates automatically. Therefore wait until the 'Hot' indication disappears. ✓ Only the Power and Start/Pause buttons operate while the 'Hot' indication displays. ✓ When the internal temperature of the drum is high, the door does not open. If you open the door by force, it may result in product damage and safety issues. Therefore wait until the temperature has dropped.</p>
	<p>When water does not drain because the internal temperature does not drop below 55 °C even if thirty minutes has passed after the wash has finished</p>	<p>Have the cold and hot water supply hoses been mixed up? ⇨ Connect the cold and hot water supply hoses correctly. ✓ Operate your washing machine again by pressing the Start/Pause button.</p>